

You can do it! Remote Sensing Analysis

Part 5 : Utilization of Remote Sensing Analysis in future

AAI's major career in Remote Sensing Analysis (RSA) in the past is shown as below. We have been trying to utilize satellite data appropriately and effectively when we carry out agricultural and/or rural area development projects in arid and semi-arid lands. And we hopefully think that RSA will be one of our main services in the future. We will keep introducing our experiences and information of new RSA technology from time to time.

AAI's Major Career in Remote Sensing Analysis

- (1) Study on Sand Dune Movement in UAE
- (2) Studies on Reflectance of Natural Vegetation and various Crops in UAE
- (3) Preparation of Present Land Use & Vegetation Map in Africa
- (4) Preparation of Present Land Use Map in Pakistan
- (5) Assessment of Present Land Use & Crop Growth in Japan

1) GIS (Geographic Information System)

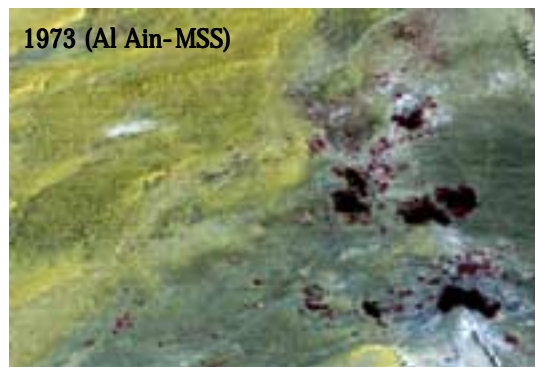
GIS is a kind of database which is becoming popular these days. GIS is defined as a technology designed to capture, store, manipulate, analyze, and visualize the numerical data sets which accompanies with spacial data. Until recently, it was rather difficult or time-consuming process to deal with GIS by using personal computers (PCs). Nowadays, many kinds of GIS software which can be operated on PCs are available, and we would like to utilize them so as to analyze remote sensing data more easily and efficiently.

2) Applying GIS to Rural Area Development Projects

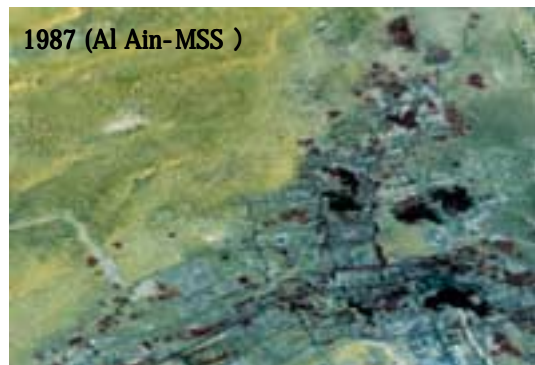
Since the resolution of satellite sensors has been improving, it is possible to analyze relatively small area precisely by using satellite data, which was rather difficult before. And now, we have more opportunity to use the satellite data when we carry out various kinds of study both in Japan and overseas. We are going to use GIS more often for these kinds of research works.

3) Getting more Experiences

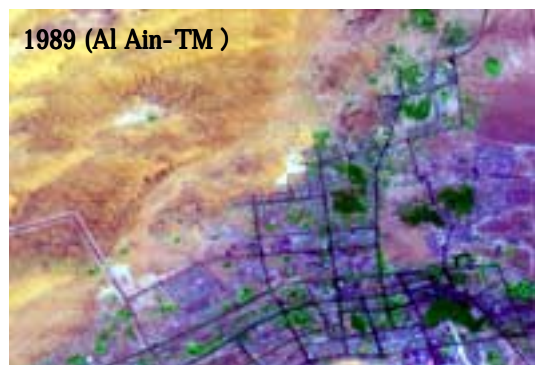
Our experiences of RSA are still not much and the way we utilized RSA was limited. Information for practical use of RSA is not prevailed yet. In order to utilize the technology more widely and effectively, it is necessary for us to get practical information through our research works, and to know in what fields or how we can utilize RSA.



1973 (Al Ain-MSS)



1987 (Al Ain-MSS)



The Change of Desert City, Al Ain - UAE